

# CREATIVE STUDIO 2 STOCKHOLM

ASIA PACIFIC  
EUROPE  
MIDDLE EAST  
NORTH AMERICA



**Welcome to our Creative Studio2 in Stockholm! We are ready to facilitate your virtual event and let you communicate with your audience, no matter where they are in the world.**

All made possible through live secured streaming, custom made interaction and on-demand technology. Our studio includes a high-res display to showcase your message or unique branding, while our ready-to-use technology offers interactivity and live communication with your worldwide audience. Creative Studio2 Stockholm offers the technology and experienced professionals to stream the production to your website, social media platforms or secured landing pages in real-time and on-demand.



## **We offer:**

- A fully equipped creative studio - ready to use
- Full HD 1080P production
- Live stream and/or on-demand webcast
- Trouble-free functionality on all viewer devices
- Interactive tools to communicate live with your audience
- Professional support from planning to distribution
- Comfortable facilities

## **Only at Creative Technology:**

- Full data analytics
- NEP Global connectivity
- All on one platform solution
- tecViz Software\*

## **GLOBAL REACH - LOCAL TOUCH**

*\*tecViz Software is fully owned and developed by the Creative Technology Group.  
ct-group.com*

# CREATIVE STUDIO 2

# STOCKHOLM

ASIA PACIFIC  
EUROPE  
MIDDLE EAST  
NORTH AMERICA



## Technical specification

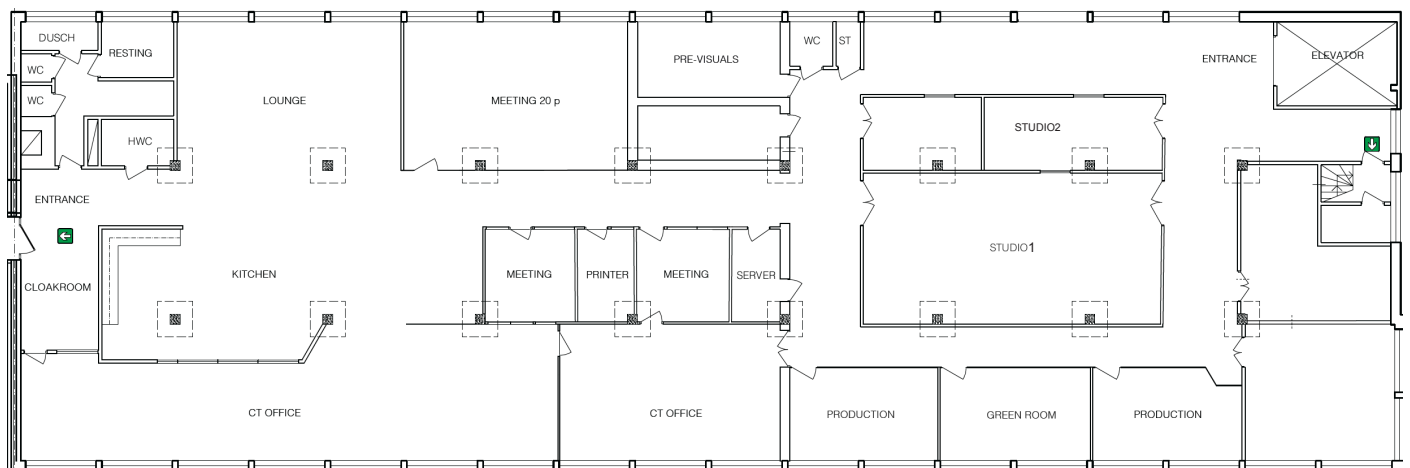
- Up to 3Gbit/s HD – SDI 1080/50p
- Remote camaras 1080p
- Playout solution
- Speaker support
- Encoding for stream
- Recording
- 4K Samsung LCD 65"

## Facilities

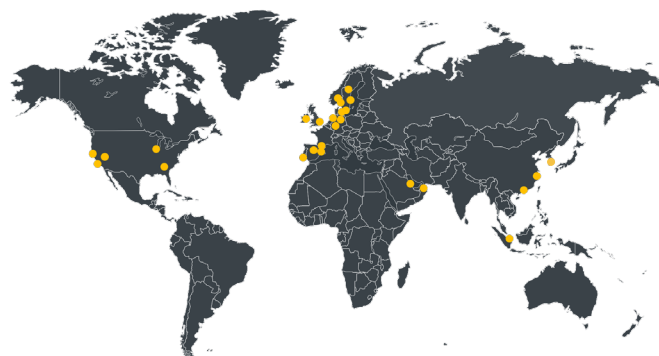
- Parking
- Kitchen area
- Restrooms
- Green room
- Meeting rooms
- Lounge

## Contact

**Address:** Ranhammarsvägen 12–14  
**Zip, City:** 168 67, Bromma, Sweden  
**Email:** [creativestudios.se@ct-group.com](mailto:creativestudios.se@ct-group.com)  
**Web:** [www.ct-group.com/ne](http://www.ct-group.com/ne)



Creative Technology operates worldwide  
Check out our [video](#) explaining the principles of Virtual Live Events!



**GLOBAL REACH - LOCAL TOUCH**

ct-group.com